

Hopper Update

Instructions

Rev. 1.02

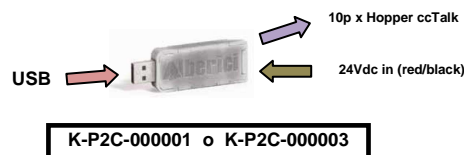
GETTING STARTED:

1. Before installing the software, verify that your PC includes the Framework 3.5 from Microsoft. If not, download it from the web.
2. If the PC does not contain drivers for the programming interface (driver file Silicon Lab), please download them: they are supplied with the CD-kit software programming, or can be downloaded from the Download section of www.alberici.net, under the heading 'programming kit' / 'Driver universal kit'.
3. Copy the "Updating Cards Alberici v3.8.zip" application file to your desktop PC, then unzip the desktop files it contains.
4. Copy the "hopper_s11_p3.0.8.alb" file to your desktop.
5. To carry out the update, you will need the grey USB dongle/key with wire cable 4p/ 0p (cod. K-P2C-000001 or K-P2C-000003) and with red and black wires for external 24 Vdc power supply:



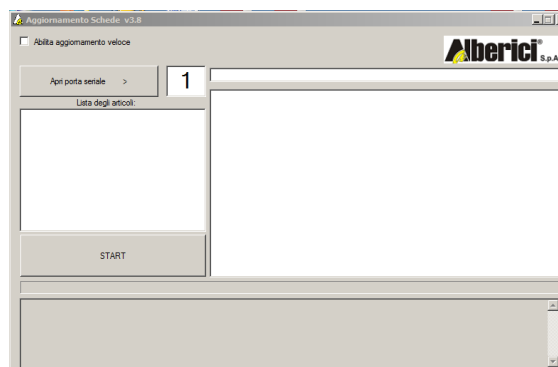
A1- Insert the dongle/key on a USB port of the PC, and prepare the cable 4p/ 10p on the 4p socket of the dongle. Do not connect it yet to the hopper connector.

A2- Supply +24V power to the dongle/key through red (+) and black (-) wires.

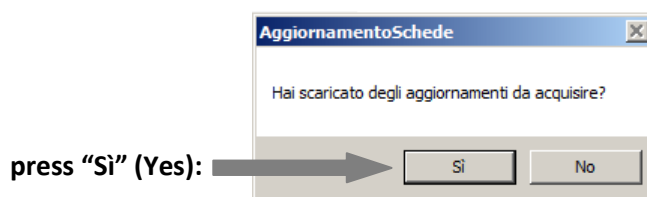


A3- Check the COM port to which the PC detects the programming interface (check your PC: Control Panel / Device Manager); insert the correct port number.

A4- Launch the application " Aggiornamento Schede Alberici v3.8.zip ". The below window will appear:

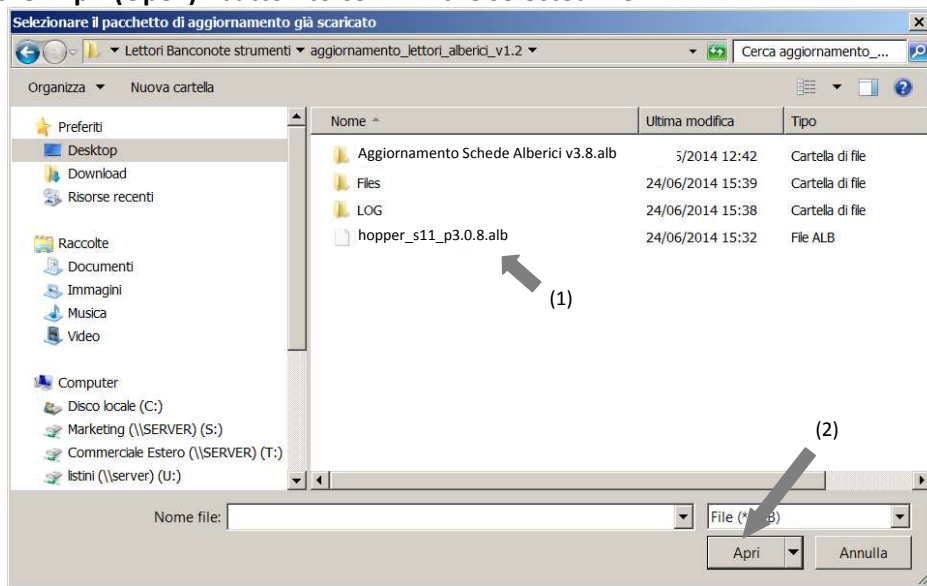


Then the following prompt shall appear:

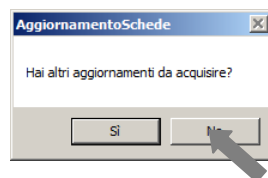


Press "No" if you want to use a previously downloaded firmware.

A5- The navigation window will appear automatically. Navigate up to the folder where you saved the update file ("hopper_s11_p3.0.8.alb"), and select it. Then press the "Apri (Open)" button to confirm the selected file.

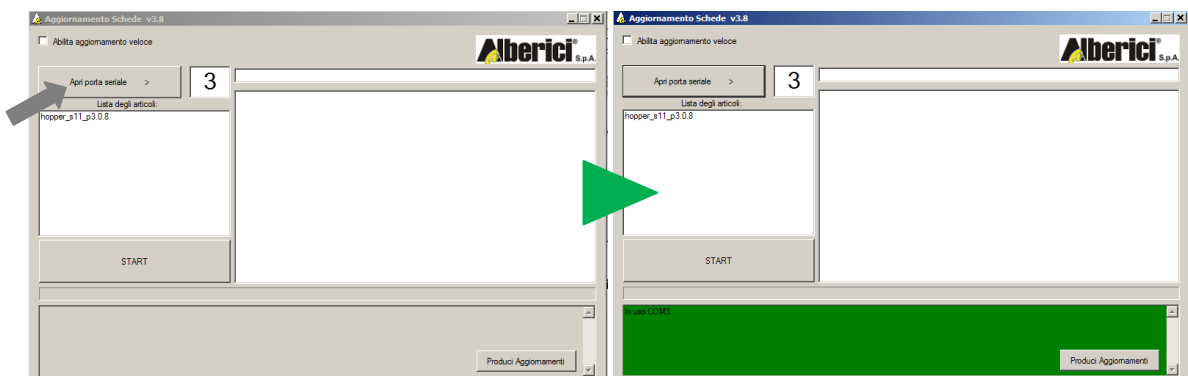


A6- The program will transfer the file name in the portfolio, and ask you if other files need to be downloaded. Choose "No"

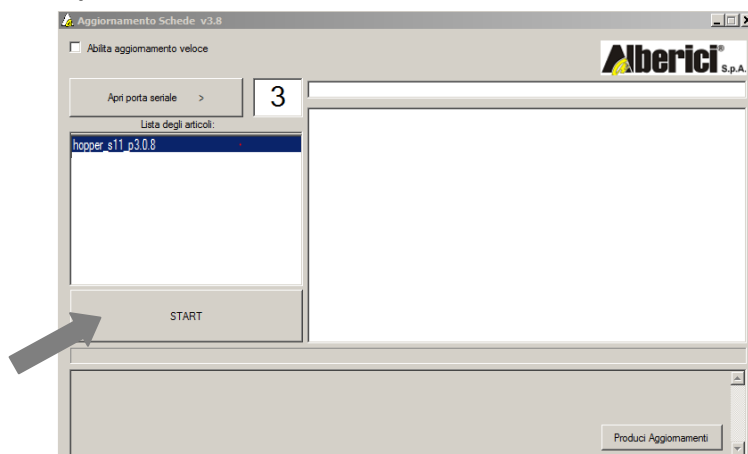


A7- Make sure the COM PORT appearing next to the button "Open serial port" is correct, as explained in section A3). If necessary, enter the correct port number (ex .: 3).

A8- Press button "Apri porta seriale (Open serial port)", and the lower part of the window will confirm that the port is correctly open:

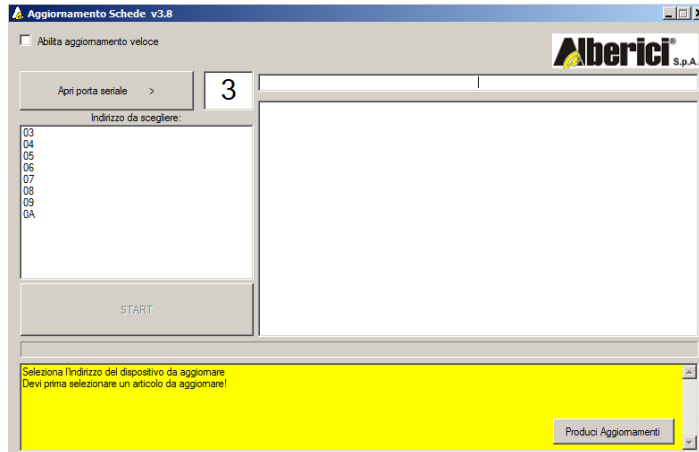


A9- Select the file and press "START":

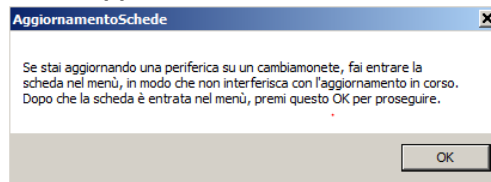


A10- You will now be prompted to select the hopper address. This address depends on the configuration of the dip-switches (DS) 1, 2 and 3 that are on the connector board of the hopper:

- DS1, DS2, DS3 all to OFF > enter 03
- DS1 su ON, DS2 e DS3 to OFF > enter 04
- DS1 e DS3 su ON, DS2 to OFF > enter 05
- ecc. ecc.

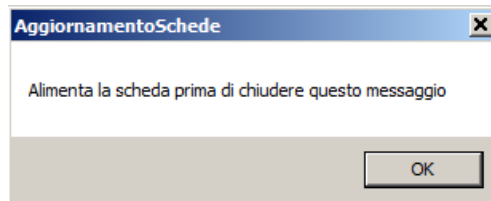


A11- The following warning info will appear:

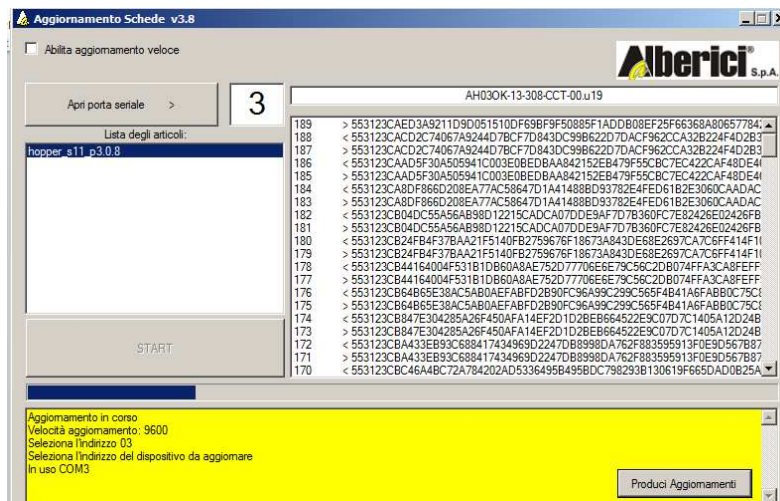


Please have your cable 10p coming from the interface kit ready. BUT DO NOT CONNECT IT YET! Press OK on the warning info shown above.

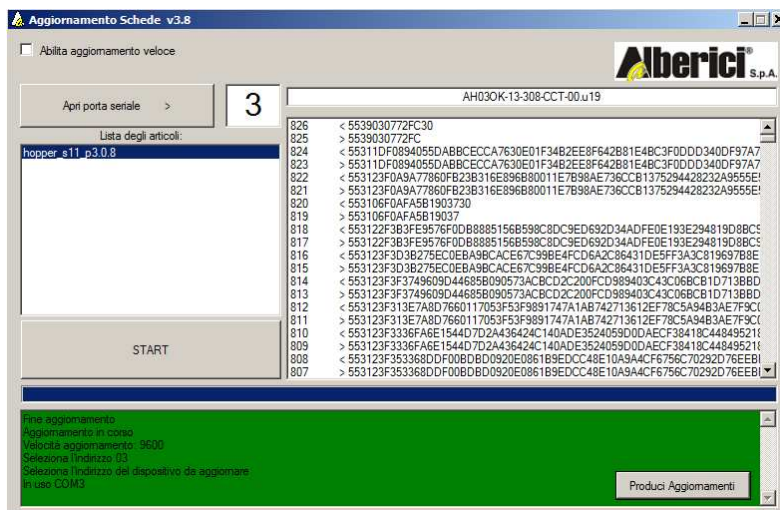
A12- A new message (below) will remind you that it is now time to provide power the hopper. Connect the cable 4p / 10p coming from the interface dongle to the 10p connector of the hopper, and then press OK on the message window:



A13- The download will start immediately. The window will show a yellow background as long as the update is in progress. The status bar (blue) indicates the update progress.



The transfer process takes approximately 2 minutes.
 At the end, a confirmation message on green background will be displayed.



A14- Exit the program, and disconnect the 10p cable. Test operation of the hopper.



Progettazione e produzione di sistemi di pagamento e accessori per macchine Gaming, Vending e Car-Wash

Via Cà Bianca, 421 - 40024
 Castel San Pietro Terme (BO) - Italy

Tel.: +39.051.944300
 Fax.: +39.051.944594

Web: www.alberici.net
 E.mail: info@alberici.net